



PRELIMINARY



All information (including, but not limited to prices, views, availability, school assignments and ratings, incentives, floor plans, elevations, site plans, features, standards and options, assessments and fees, planned amenities, programs, conceptual artists' renderings and community development plans) is not guaranteed and remains subject to change, availability or delay without notice. Any community improvements, recreational features and amenities described are based upon current development plans, which are subject to change and under no obligation to be completed. Maps and plans are not to scale, are not intended to show specific detailing and all dimensions are approximate. Prices may not include lot premiums, upgrades and options. Community Association or other fees may be required. This communication is not intended to constitute an offering in violation of the law of any jurisdiction and in such cases our communications may be limited by the laws of your state. Please see a Taylor Morrison Community Sales Manager or Internet Home Consultant for details and visit [www.taylormorrison.com](http://www.taylormorrison.com) for additional disclaimers. No Purchase Agreement may be negotiated or signed by a prospective buyer for the purchase of a home until the Community's applicable Conditional or Final Public Report has been issued by the Department of Real Estate ("DRE"). Contractor Licenses: Taylor Morrison Services, Inc. CSLB # 519465 and TM California Services, Inc. CSLB # 996430. Broker Licenses: Taylor Morrison Services, Inc. DRE # 00968975 and TM California Services, Inc. DRE # 1954562. 10/28/20 2484



### Energy Efficiency Features

- Alpine® Low-E windows
- Rinnai® tankless water heater w/ on-demand recirculation pump
- Radiant barrier roof sheathing
- Insulation at all exterior walls and attic space
- ENERGY STAR® dishwasher
- Lennox® high-efficiency heating and air conditioning
- 2" x 6" exterior wall framing
- Pressure balancing jump ducts to all bedrooms or habitable rooms with doors
- LED low profile lighting

### Dramatic Interior Features

- Designer-selected Mohawk® carpet in gathering room, dining, flex, loft and all bedrooms (per plan)
- Six-panel interior doors with Schlage® bright chrome hardware
- Stylish cultured marble countertops in laundry and all secondary baths
- Smart Home package
- LED lighting throughout
- Technology hubs with enhanced high-speed CAT 5E wiring and RG6 cable with 2-port outlet in owner's bedroom & 4-port outlet in gathering room (per plan)
- Rounded wall corners
- Smoke detectors, carbon monoxide alarm and interior fire sprinkler system
- Moen® chrome fixtures in baths
- Recessed Alder cabinetry with adjustable shelving and easy-to-clean interiors
- 12" x 12" Daltile® tile flooring at entry, kitchen, laundry and all bathrooms
- 3¼" baseboard with 2¼" door casing throughout
- Craftsman-style white handrail and baluster with square posts at stairs (per plan)

### Distinctive Exterior Features

- Eagle® tile roofing
- WiFi enabled garage door with battery back-up and two remotes
- Exterior Kichler® coach lighting
- Designer-selected exterior paint for enhanced community appearance
- Therma-Tru® 8 ft. entry door with Schlage® satin nickel hardware
- Professionally-designed front yard landscaping with weather-sensing irrigation system
- Ring® video doorbell, WiFi enabled

### Elegant Owner's Suite and Bath Features

- Elegant cultured marble countertops
- Spacious walk-in closet
- Convenient double sinks
- Recessed Alder cabinets
- Hand-set 12" ceramic tile flooring

### Designer Kitchen Features

- GE® stainless steel appliance package including 36" built-in gas cooktop, 36" under-the-cabinet hood, 30" built-in wall oven & microwave and multi-cycle dishwasher
- Hand-set 12" ceramic tile flooring
- Stainless steel undermount Sterling® sink with Moen® hands-free kitchen faucet
- Moen® lighted garbage disposal
- One combination USB charger
- Recessed Alder cabinets with 42" uppers
- Granite countertops with 6" backsplash and full backsplash at cooktop



All information (including, but not limited to prices, views, availability, school assignments and ratings, incentives, floor plans, elevations, site plans, features, brands, standards and options, assessments and fees, planned amenities, programs, conceptual artists' renderings and community development plans) is not guaranteed and remains subject to change, availability or delay without notice. Any community improvements, recreational features and amenities described are based upon current development plans, which are subject to change and under no obligation to be completed. Maps and plans are not to scale, are not intended to show specific detailing and all dimensions are approximate. Prices may not include lot premiums, upgrades and options depending on stage of construction. Community Association or other fees may be required. This communication is not intended to constitute an offering in violation of the law of any jurisdiction and in such cases our communications may be limited by the laws of your state. Please see a Taylor Morrison Community Sales Manager or Internet Home Consultant for details and visit [www.taylormorrison.com](http://www.taylormorrison.com) for additional disclaimers. For our Age Qualified Communities only: At least one resident of household must be 55 or older, and additional restrictions apply. Some residents may be younger than 55 in limited circumstances. For minimum age requirements for permanent residents in a specific community, please see a Taylor Morrison Community Sales Manager for complete details. No Purchase Agreement may be negotiated or signed by a prospective buyer for the purchase of a home until the Community's applicable Conditional or Final Public Report has been issued by the Department of Real Estate ("DRE"). Contractor Licenses: Taylor Morrison Services, Inc. CSLB # 519465 and TM California Services, Inc. CSLB # 996430. Broker Licenses: Taylor Morrison Services, Inc. DRE # 00968975 and TM California Services, Inc. DRE # 1954562. 08/10/20 1610-SAC



[taylormorrison.com](http://taylormorrison.com)



At the heart of your home is the health and wellness of the ones you love.

TM LiveWell pushes the boundaries of what it means to build a healthy home. Cleaner air. Cleaner water.

Your well-being starts here.



**Clean Air**

- **MERV 13 Air Filter**
- **NEST® | Thermostat with WiFi**
- **Broan® | Room Fan (in all full bathrooms)**



**Clean Water**

- **Moen® | Hands-Free Kitchen Faucet**
- **Moen® | Eco-friendly Shower Heads & Faucets**
- **AquaSana 3-Stage Max Kitchen Water Filter**



**Removal of Chemicals**

- **Sherwin-Williams® | Low VOC Paint**

\*Nothing contained herein or in any related materials regarding LiveWell™ included features is a guaranteed commitment on performance results or independently verified and remain subject to change daily without notice by third party suppliers and outside of Taylor Morrison's control.



All information (including, but not limited to prices, views, availability, school assignments and ratings, incentives, floor plans, elevations, site plans, features, brands, standards and options, assessments and fees, planned amenities, programs, conceptual artists' renderings and community development plans) is not guaranteed and remains subject to change, availability or delay without notice. Any community improvements, recreational features and amenities described are based upon current development plans, which are subject to change and under no obligation to be completed. Maps and plans are not to scale, are not intended to show specific detailing and all dimensions are approximate. Prices may not include lot premiums, upgrades and options depending on stage of construction. Community Association or other fees may be required. This communication is not intended to constitute an offering in violation of the law of any jurisdiction and in such cases our communications may be limited by the laws of your state. Please see a Taylor Morrison Community Sales Manager or Internet Home Consultant for details and visit [www.taylormorrison.com](http://www.taylormorrison.com) for additional disclaimers. For our Age Qualified Communities only: At least one resident of household must be 55 or older, and additional restrictions apply. Some residents may be younger than 55 in limited circumstances. For minimum age requirements for permanent residents in a specific community, please see a Taylor Morrison Community Sales Manager for complete details. No Purchase Agreement may be negotiated or signed by a prospective buyer for the purchase of a home until the Community's applicable Conditional or Final Public Report has been issued by the Department of Real Estate ("DRE"). Contractor Licenses: Taylor Morrison Services, Inc. CSLB # 519465 and TM California Services, Inc. CSLB # 996430. Broker Licenses: Taylor Morrison Services, Inc. DRE # 00968975 and TM California Services, Inc. DRE # 1954562. 08/10/20 1610-SAC



[taylormorrison.com](http://taylormorrison.com)



ELEVATION A

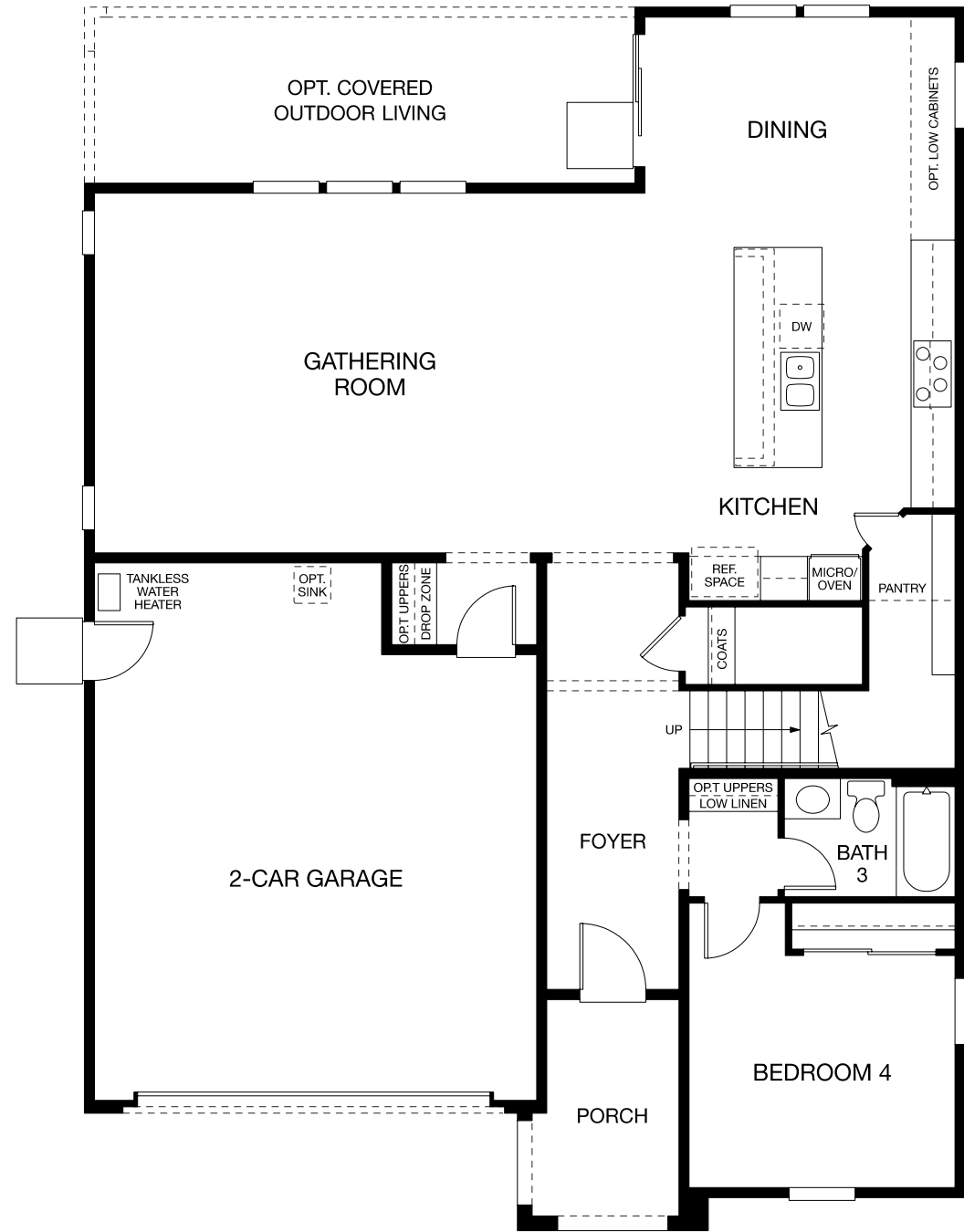


ELEVATION B

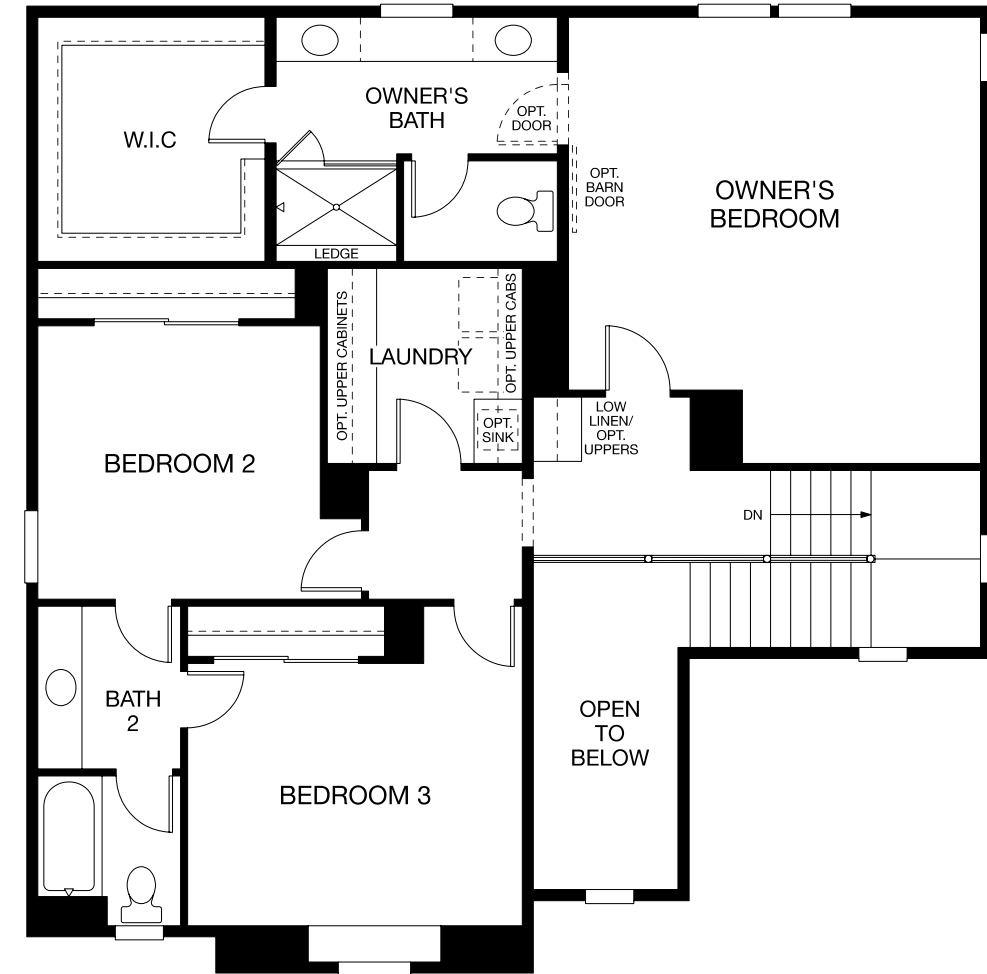


ELEVATION C

PRELIMINARY  
PLAN 6



FIRST FLOOR  
ELEVATION A



SECOND FLOOR  
ELEVATION A

PRELIMINARY  
PLAN 6

